



Network

Dome

# XNV-6120R

2M H.265 IR Dome Camera



## Key Features

- Max. 2Megapixel (1920 x 1080) resolution
- 5.2 ~ 62.4mm (Optical 12X) Optical Lens
- Max. 60fps@all resolutions (H.265 / H.264)
- H.265, H.264, MJPEG Codec Supported
- Multiple streaming, IVA, Sound Classification
- Day & Night (ICR), WDR (150dB), Defog, Handover
- Fog Detection, Tampering, Motion Detection
- SD / SDHC / SDXC 2 Slot (Max. 512GB)
- Hallway View, WiseStreamII Support
- IR Viewable Length 70m (229.66ft)

## Compatible Devices



SBP-300HM6



SBP-300CM



SBV-160WC



SBV-158G



SBP-300PM



SBP-300KM



SBP-300WM1



SBP-300LM



SPB-VAN71



SBP-390WM2



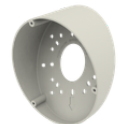
SBP-300WM



SBP-300B



SHD-1600FPW



SBP-160TM

# XNV-6120R

2M H.265 IR Dome Camera



## Specifications

| Video                         |   |                        |
|-------------------------------|---|------------------------|
| Imaging Device                | Size  | 1/2.8"                 |
|                               | Type  | CMOS                   |
| Resolution                    | 1920x1080, 1280x1024, 1280x960, 1280x720, 1024x768, 800x600, 800x448, 720x576, 720x480, 640x480, 640x360, 320x240 |                        |
| Max. Framerate                | H.265/H.264   | 60fps/50fps(60Hz/50Hz) |
|                               | MJPEG   | 30fps                  |
| Min. Illumination (Lux)       | Color(1/30sec, 30IRE)   | 0.03                   |
|                               | BW(1/30sec, 30IRE)  | 0.003                  |
| Video Out                     | CVBS: 1.0 Vp-p / 75Ω composite for installation,<br>USB: Micro USB Type B   |                        |
| Lens                          |   |                        |
| Focal Length (mm)             | 5.2~62.4  |                        |
| Zoom Ratio                    | Optical   | 12x                    |
| Max Aperture Ratio (F number) | Wide  | 1.6                    |
|                               | Tele  | 3.0                    |
| Angular Field of View         | Horizontal  | 54.58°~5.30°           |
|                               | Vertical  | 32.19°~3.00°           |
|                               | Diagonal  | 61.4°~6.06°            |
| Min. Object Distance          | 2.1m(6.89ft)  |                        |
| Focus Control                 | Oneshot AF  |                        |
| Lens Type                     | DC auto iris  |                        |
| Pan / Tilt / Rotate           |   |                        |
| Pan / Tilt / Rotate Range     | Pan   | 0°~354°                |
|                               | Tilt  | 0°~75°                 |
|                               | Rotate  | 0°~355°                |
| Operational                   |   |                        |
| Day & Night                   | Auto(ICR)   |                        |
| Backlight Compensation        | BLC, HLC, WDR, SDR  |                        |

## Operational

|  |                |   |
|--|----------------|---|
| Wide Dynamic Range (dB)                  |                | 150   |
| Digital Noise Reduction                  |                | SSNR V  |
| Digital Image Stabilization              |                | Support   |
| Defog                                    |                | Support   |
| Motion Detection                         | Quantity       | 8ea   |
|  | Shape          | 8point Polygonal zones  |
| Privacy Masking                          | Quantity       | 32ea  |
|  | Shape          | Polygonal zones   |
|  | Color / Option | Gray, Green, Red, Blue, Black, White, Mosaic  |
| Gain Control                             |                | Low, Middle, High   |
| White Balance                            |                | ATW, AWC, Manual, Indoor, Outdoor   |
| LDC                                      |                | Support   |
| Electronic Shutter                       | Mode           | Minimum, Maximum, Anti flicker  |
|  | Speed Range    | 2~1/12,000sec   |
| Video Rotation                           |                | Flip, Mirror, Hallway view(90°/270°)  |
| Alarm Interface                          | In/Out         | Input 1ea, Output 1ea   |
| Alarm Triggers                           |                | Analytics, Network disconnect, Alarm input  |
| Alarm Events When Alarm Trigger Occurred |                | File upload(image): e-mail/FTP,<br>Notification: e-mail,<br>Recording: SD/SDHC/SDXC or NAS recording at event triggers,Alarm output |
| Audio In                                 |                | Selectable(mic in/line in)  |
| Audio Out                                |                | Line out  |
| Light Type                               |                | IR LED  |
| Light Viewable Length                    | IR             | 70m(229.66ft)   |
| IR Wavelength                            |                | 850nm   |

## Analytics

|                  |        |  |
|------------------|--------|--|
| Analytics Events | Normal | Defocus detection, Motion detection, Tampering, Fog detection, Face detection, Audio detection, Sound classification, Virtual area(Lotering, Intrusion, Enter/Exit, Appear/Disappear), Virtual line(Crossing, Direction) . Digital auto tracking |
|------------------|--------|--|

## Network

|                   |   |
|-------------------|---|
| Ethernet          | RJ-45(10/100BASE-T)   |
| Video Compression | H.265/H.264: Main/Baseline/High, MJPEG  |
| Audio Compression | G.711 u-law /G.726 selectable,G.726(ADPCM) 8kHz,G.711 8kHz,<br>G.726: 16kbps,24kbps,32kbps,40kbps,<br>AAC-LC: 48kbps at 16kHz |
| Smart Codec       | Manual, WiseStream II   |
| Bitrate Control   | H.265/H.264: CBR or VBR,<br>MJPEG: VBR  |

## Network

|                                   |                    |  |
|-----------------------------------|--------------------|--|
| Streaming                         | Unicast            | Up to 20 users   |
|                                   | Multicast          | Support  |
|                                   | Multiple Streaming | Up to 10 profiles  |
| Protocol                          |                    | IPv4, IPv6, TCP/IP, UDP/IP, RTP(UDP), RTP(TCP), RTCP, RTSP, NTP, HTTP, HTTPS, SSL/TLS, DHCP, FTP, SMTP, ICMP, IGMP, SNMPv1/v2c/v3(MIB-2), ARP, DNS, DDNS, QoS, UPnP, Bonjour, LLDP, SRTP(TCP, UDP Unicast), PIM-SM |
| Application Programming Interface | ONVIF              | S, G, T  |
|                                   | Others             | SUNAPI(HTTP API), Hanwha Vision Open Platform  |
| Direct Cloud Connection           |                    | Optional (needs gateway)   |

## Security

|                        |   |  |
|------------------------|---|--|
| OS / Firmware Protect  | Encrypted firmware, Secure boot, Signed firmware                        |  |
| User authentication    | Digest authentication   |  |
| Network authentication | IEEE 802.1X(EAP-TLS, EAP-LEAP)  |  |
| Secure Communication   | HTTPS, WSS(WebSocket Secure), SRTP                                      |  |
| Access Control         | IP-based access control   |  |
| Data Protect           | Encryption credentials, Encrypt compress for live recording file export |  |
| Audit                  | Access / System / Event Log management                                  |  |
| Secure Storage         | SDcard partition encrypt(AES-256)                                       |  |

## General

|              |                    |                               |
|--------------|--------------------|-------------------------------|
| Memory       | RAM                | 1GB                           |
|              | Flash              | 256MB                         |
| Edge Storage | Micro SD/SDHC/SDXC | Max. 512GB x 2slot(Total 1TB) |

## Environmental & Electrical

|                     |             |  |
|---------------------|-------------|--|
| Operating Condition | Temperature | -40°C~+55°C(-40°F~+131°F)              |
|                     | Humidity    | 0~90% RH(non-condensing)               |
|                     | Others      | Start up should be done at above -35°C |
| Storage Condition   | Temperature | -50°C~+60°C(-58°F~+140°F)              |
|                     | Humidity    | 0~90% RH(non-condensing)               |
| Input Voltage       |             | PoE(IEEE802.3af, Class3), 24VAC, 12VDC |
| Power Consumption   | PoE         | Max. 12.95W                            |
|                     | 12VDC       | Max. 11.5W                             |
|                     | 24VAC       | Max. 14W                               |

## Mechanical

|          |          |
|----------|----------|
| Color    | Ivory    |
| Material | Aluminum |

---

## Mechanical

|                    |                          |
|--------------------|--------------------------|
| Product Dimensions | ø160x128.5mm(6.30x5.06") |
| Product Weight     | 995g(2.19lb)             |

---

## Certifications & Standards

|             |  |
|-------------|--|
| Environment | IEC 60529 IP66, IEC 60529 IP67, IEC 62262 IK10, NEMA 250 type 4X |
|-------------|--|

# XNV-6120R

2M H.265 IR Dome Camera



## CAD

Unit: mm [inch]

This parts should not contain any substances which are specified in RoHS-100326.

| NO | PART NAME                     | CODE NO. | MATERIAL | QTY | REMARK |
|----|-------------------------------|----------|----------|-----|--------|
| 1  | ASST-XNV-6120R-Kamer-16*16120 | 00961    |          | 1   |        |

| STANDARD TOLERANCE | UNIT | DESIGN     | CHECK | APPROVAL | PART NAME                     |
|--------------------|------|------------|-------|----------|-------------------------------|
| GDY                | mm   | M.Pajiwara | -     | ByungJin | ASST-XNV-6120R-Kamer-16*16120 |
| 1-10               |      |            |       | Jun      | MODEL NAME                    |
| 11-18              |      |            |       |          | MODEL NAME                    |
| 19-28              |      |            |       |          | MODEL NAME                    |
| 29-34              |      |            |       |          | MODEL NAME                    |
| 35-50              |      |            |       |          | MODEL NAME                    |
| 51-63              |      |            |       |          | MODEL NAME                    |
| 64-130             |      |            |       |          | MODEL NAME                    |

| SCALE | DATE     | DESIGNER | CHECKER | APPROVAL | CODE NO. |
|-------|----------|----------|---------|----------|----------|
| 1/1   | 17.03.24 |          |         |          | 00961    |

**Hanwha Techwin**